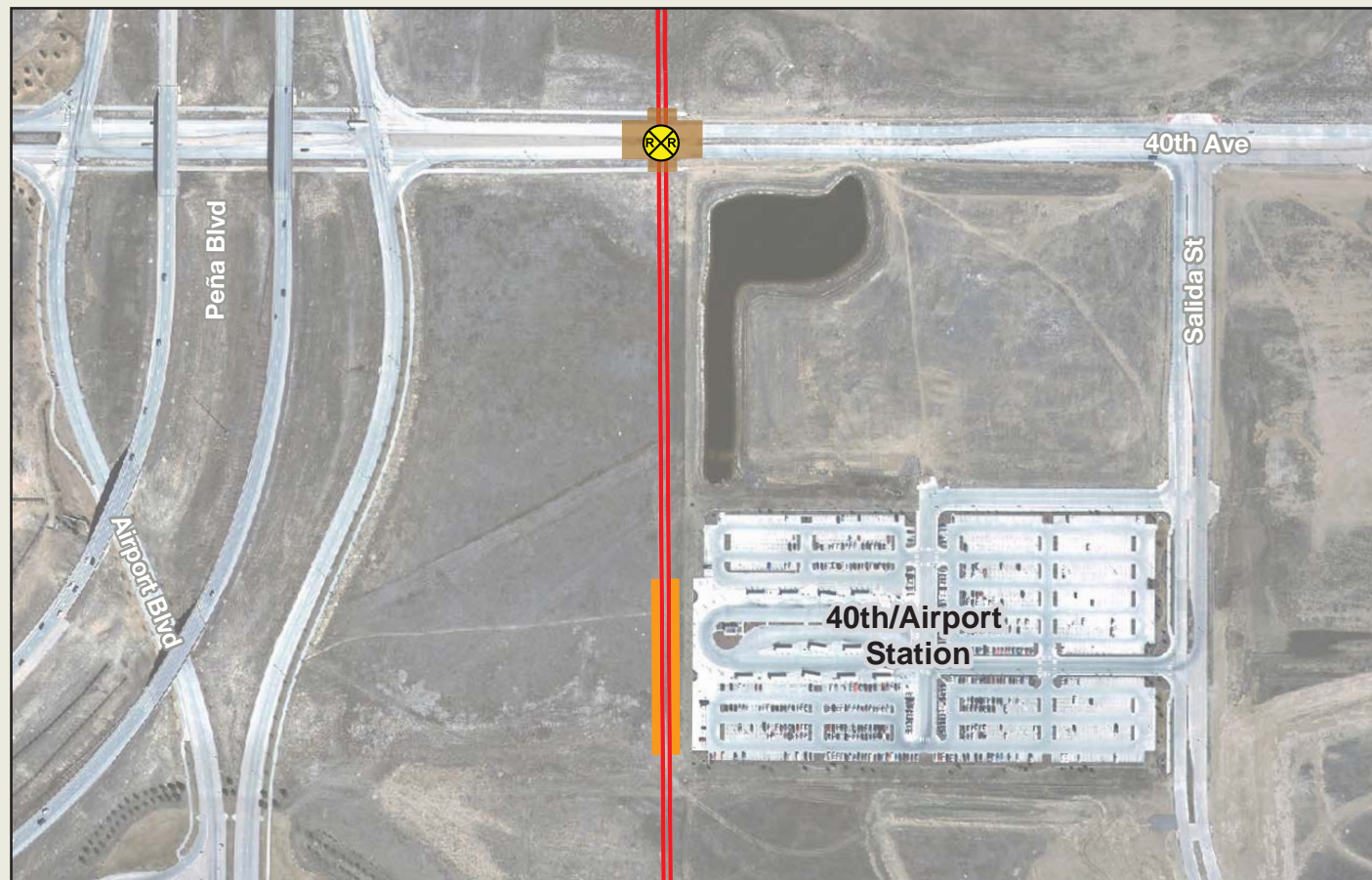


40th Avenue Design Options

The East Corridor crosses 40th Avenue north of the 40th/Airport station. The traffic analysis completed for the EIS determined that the traffic impacts from the East Corridor can be mitigated without a grade separation of this crossing. A design option was developed in response to local agency and potential private party plans to fund and grade separate 40th Avenue under the commuter rail alignment.

Design Option 1 (FEIS Preferred Alternative)

In this design option, the rail alignment would cross 40th Avenue at grade.



Design Option 2

In this design option, the rail alignment would cross over 40th Avenue. This design option is evaluated because there is the possibility that 40th Avenue would be lowered by a private party prior to the construction of the East Corridor.

