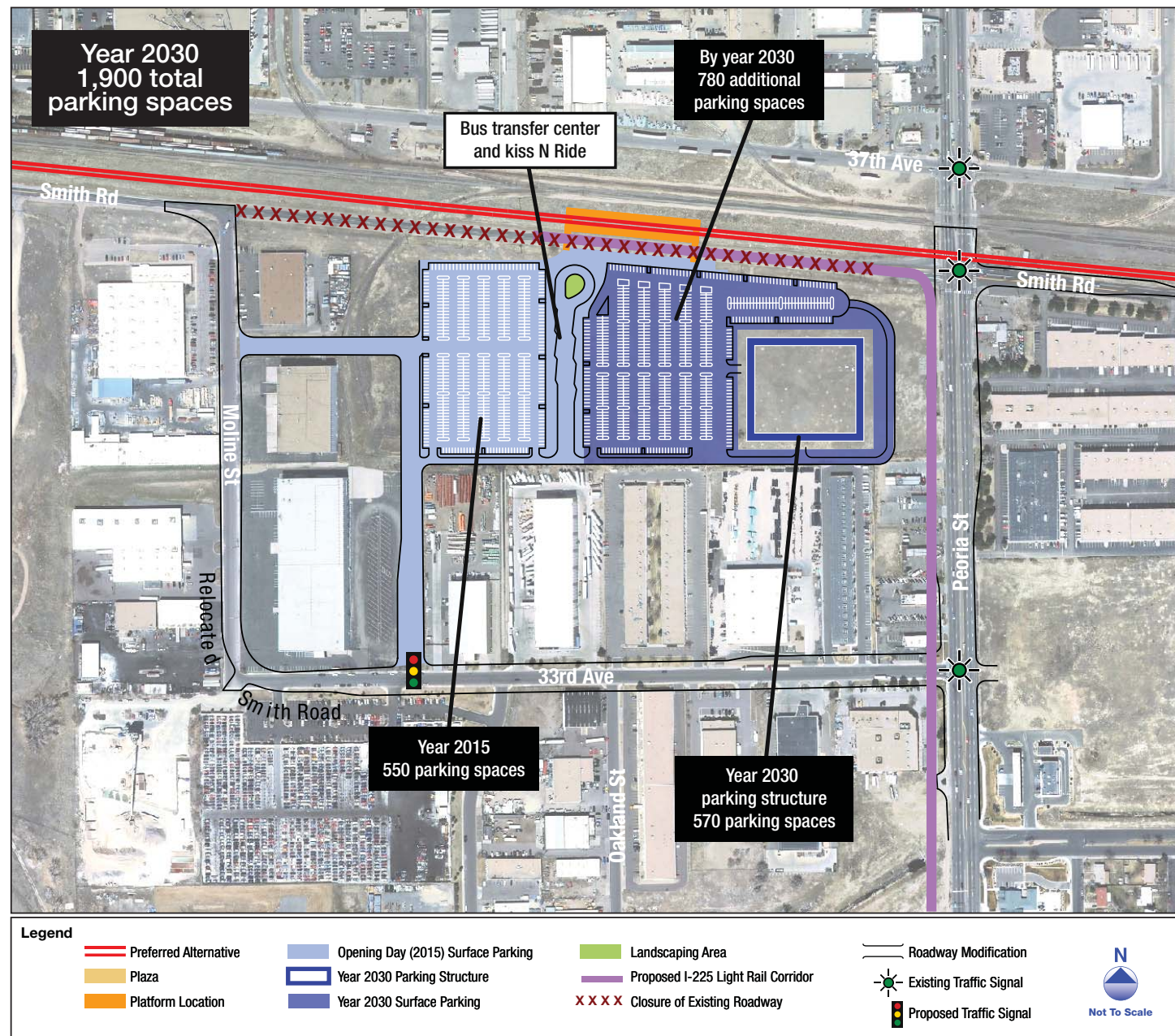


Station Overview

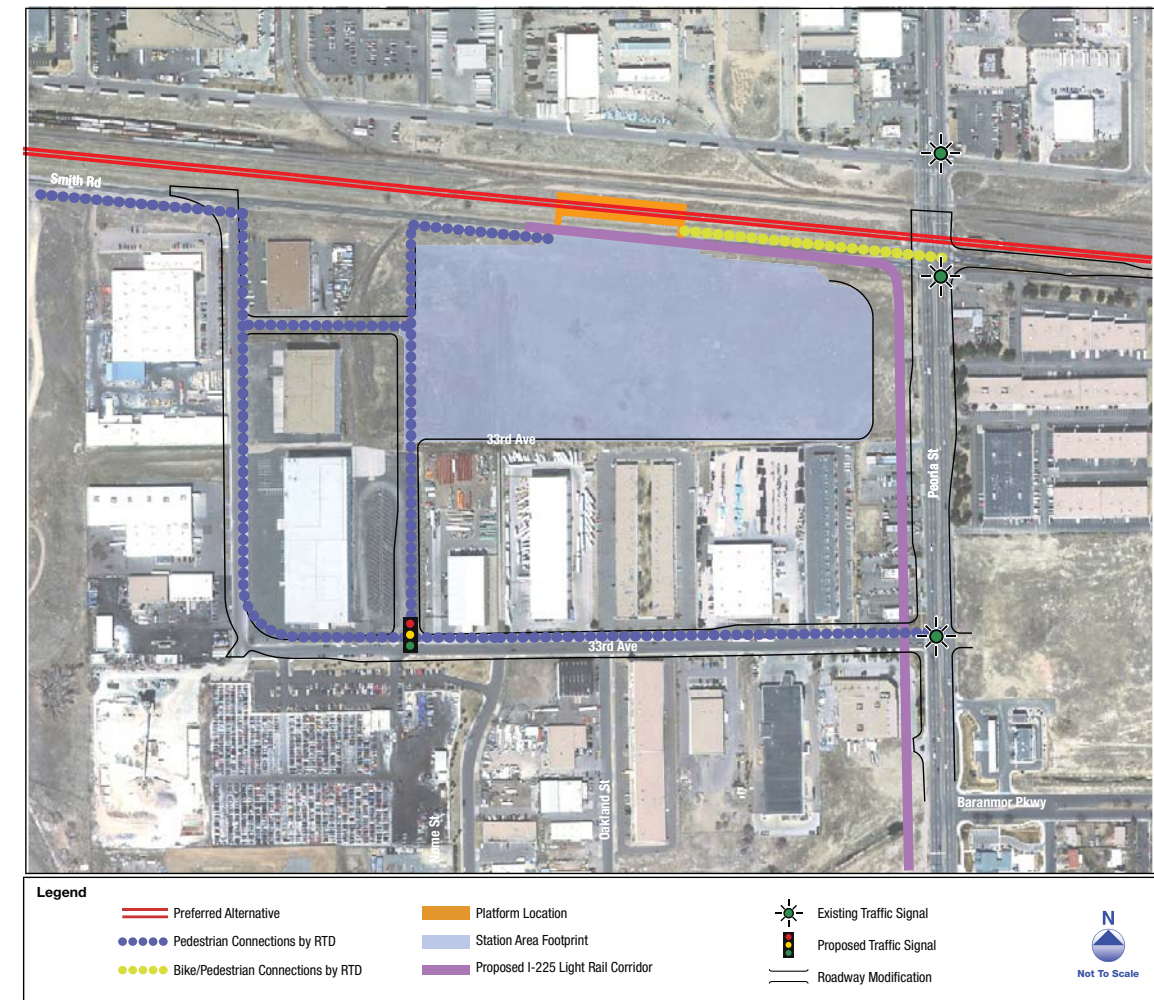
This station would provide 550 parking spaces on opening day (2015) and 1,900 spaces (including 570 spaces in a structure) in 2030. Smith Road would be realigned between Moline Street and Peoria Street, along Moline Street, 33rd Avenue, and Peoria Street. The existing portion of Smith Road between Moline Street and Peoria Street would be closed.



Refined Access

RTD would provide pedestrian walkways and bike connections at key locations near the station including:

- Two new access roads
- The north side of the park-n-Ride south of UPPR to Peoria Street
- Relocated Smith Road
- Access throughout the park-n-Ride



Additional off-site connections required to enhance the connectivity from the adjacent community and existing pedestrian network to the station are identified in the FEIS. These enhanced connections would be implemented by the local jurisdiction or other parties. RTD will continue to coordinate with local jurisdictions regarding non-project related improvements.