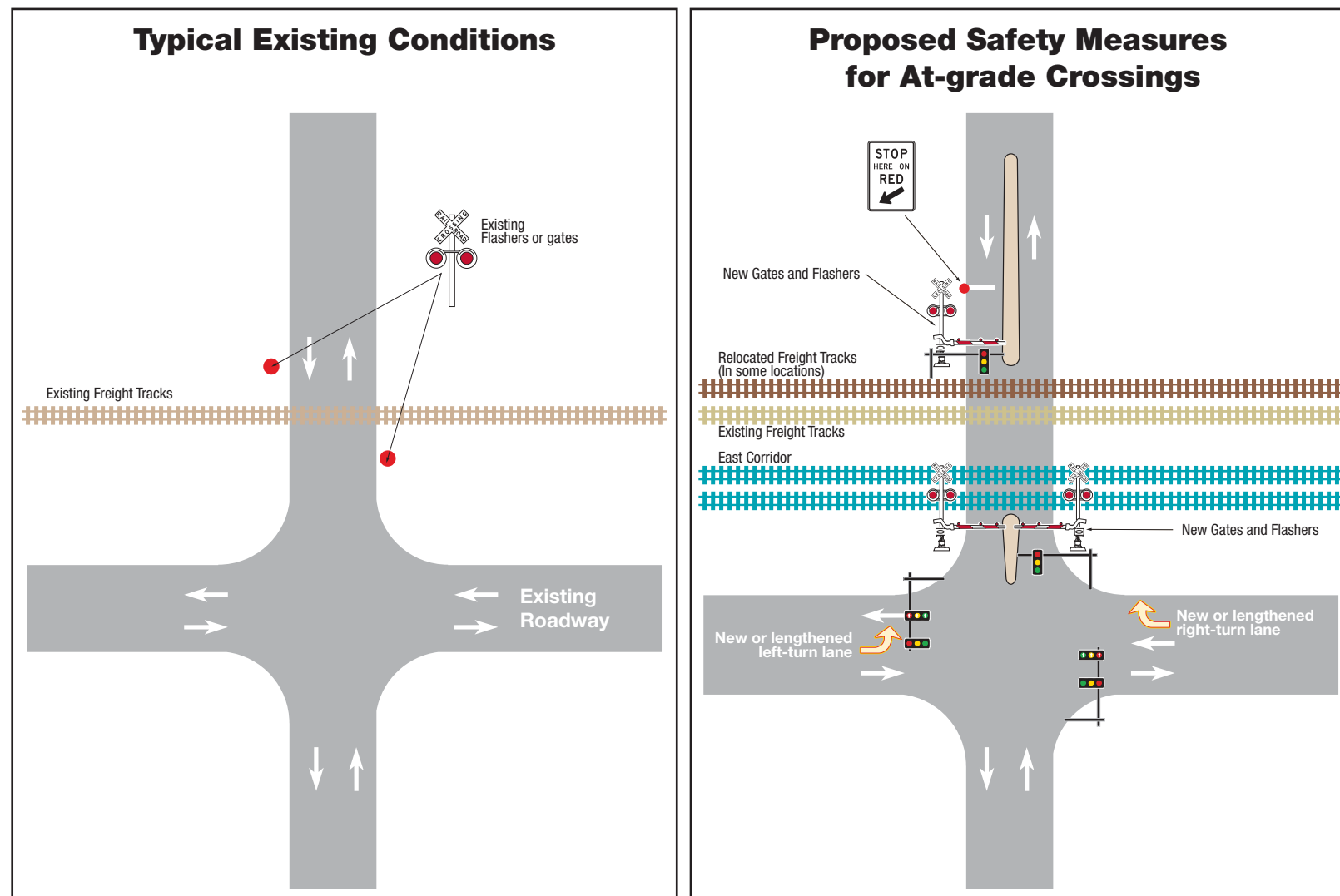


Roadway Crossings

Safety at roadway crossings for pedestrians, bicyclists, buses, cars, and trains is a key concern.

Typical measures to improve safety for at-grade crossings include visual and audible signals, roadway modifications, and crossing gates. RTD has considered these measures as appropriate for each at-grade crossing.



Crossings in the Preferred Alternative are summarized in three categories; at grade, grade separated, and closed. Crossings included in each category are listed below and shown on the previous exhibits.

Crossings at grade

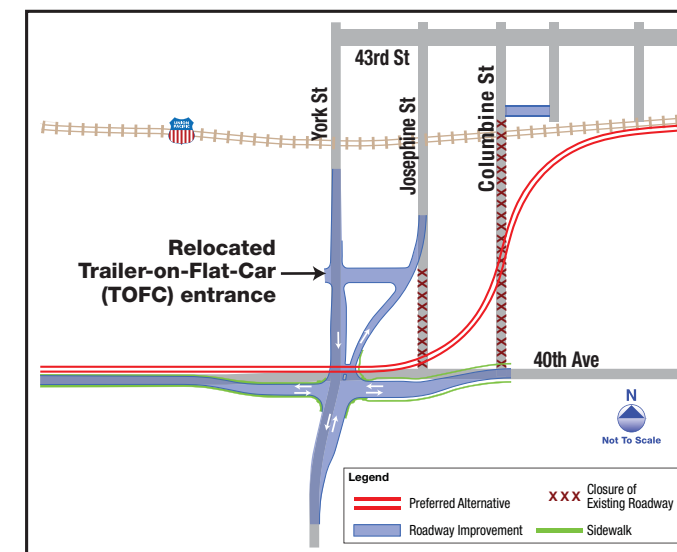
- York Street/Josephine Street
- Clayton Street
- Steele Street
- Dahlia Street
- Holly Street
- Monaco Street
- Quebec Street Southbound Frontage Road
- Quebec Street Northbound Frontage Road
- Ulster Street
- Havana Street
- Peoria Street
- Sable Road
- Chambers Road
- 40th Avenue*
- 48th Avenue
- Tower Road
- Tibet Street (Private DIA access)

Crossings grade separated

- 19th Street/20th Street
- 22nd Street/Park Avenue
- Broadway/Brighton Boulevard
- 38th Street
- Colorado Boulevard
- Quebec Street
- I-225
- Airport Boulevard
- 31st Avenue
- Pagosa Street
- 32nd Place
- I-70
- 56th Avenue
- E-470
- Peña Boulevard
- New Castle Street*
- Westbound Peña Boulevard (exit from DIA)
- Eastbound Peña Boulevard (entrance to west side of DIA)
- Terminal commercial vehicle service road (between exit from east side and entrance to west side of DIA)

Crossing closed

- **Columbine Street**
The Preferred Alternative recommends Columbine Street be closed to avoid a skewed at-grade crossing with the commuter rail alignment. Josephine Street would also be realigned at 40th Avenue so it would share the existing York Street and 40th Avenue intersection. This creates a single commuter rail crossing at York Street and Josephine Street, which is safer than two separate crossings and also avoids a skewed street crossing with the commuter rail.



* Design options for the 40th Avenue and New Castle Street crossings are also included in the FEIS.